

Physical

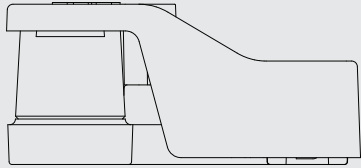
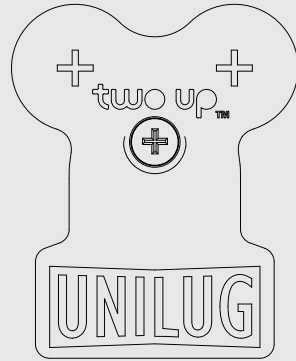
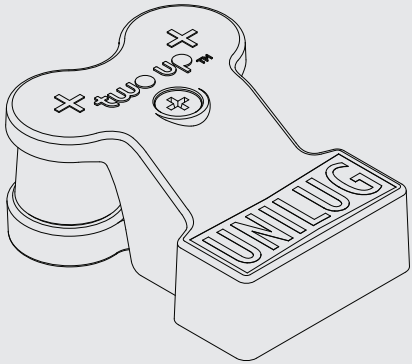
Battery lug	Forged JIS 3771 brass satin nickel plating
Adaptor post	Machined JIS C3604 brass satin nickel plated
Protective cover	Impact/Temperature resistant PA-6 (Nylon)
Hardware	Cover screw SUS304, all other zinc plated steel

Mechanical

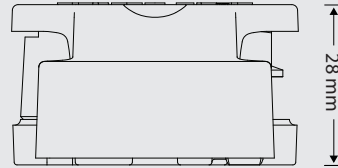
Termination	M8 x 18L threaded post
Adaptor post	M8 x SAE taper to J1811
Weight*	Positive kit: 175g Negative kit: 170g

* when fitted with adaptor post and protective cover

Dimensions



63 mm

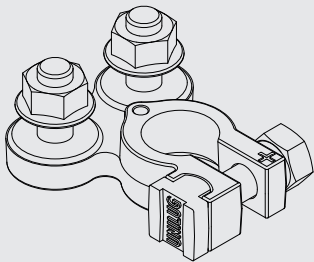


51 mm

28 mm

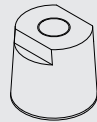
Other

Components available separately in bulk.



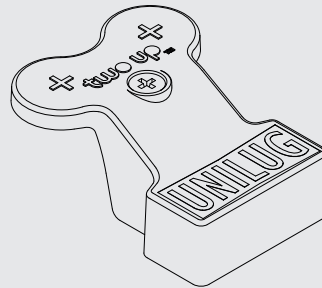
Lug Assembly

Positive: UMAP-L
Negative: UMAN-L



Adaptor Post

Positive: UMAP-A
Negative: UMAN-A



Protective Cover

Positive: UMAP-C
Negative: UMAN-C

Premium Connectors For Dual Battery Installations



UNILUG

Don't cut those battery leads!

Installing a dual battery system is not for the faint hearted. Finding a place in modern vehicles to fit a second battery is difficult enough. Locating the isolating or charging device and routing the wiring is another story...

There is however, one stress you can avoid – cutting the factory battery leads and risking your warranty. It's just not worth the gamble.

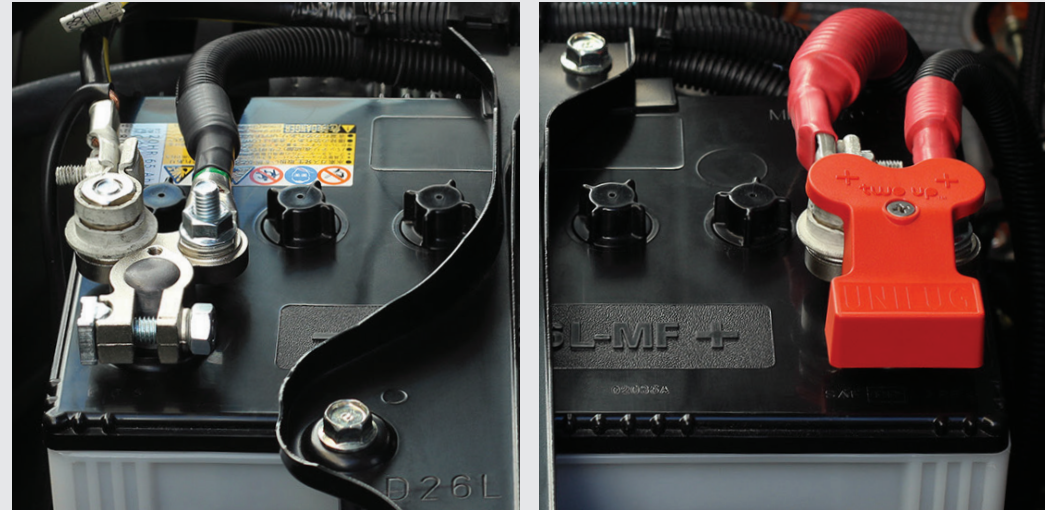
Two Up battery terminal lugs are purpose designed for dual battery installations. For a clean, no fuss, professional job – go Two Up.



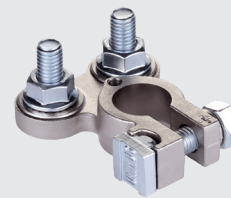
Available in Positive and Negative



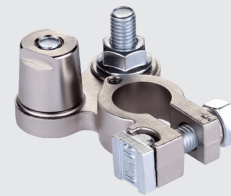
Forged not cast and built to last!



- Forged from high grade brass for ultimate strength and greater conductivity.
- Mating surfaces are machined then satin nickel plated for superior performance.
- Moulded Nylon lug cover protects against accidental short circuit.
- Design allows wiring to rotate through an arc of 180° at either terminating post.



shown with both universal flanged hex nuts fitted



shown with one universal flanged hex nut and adaptor post fitted



shown with the Nylon battery lug cover fitted

