



Premium Connectors For Dual Battery Installations

Two Up battery terminal lugs are purpose designed for dual battery installations where it is not desirable to cut or modify the factory battery leads or terminals. The concept allows factory strap type battery terminals to be fitted to a special tapered adaptor at the same time providing an additional terminating post to connect auxiliary batteries and/or ancillary equipment.



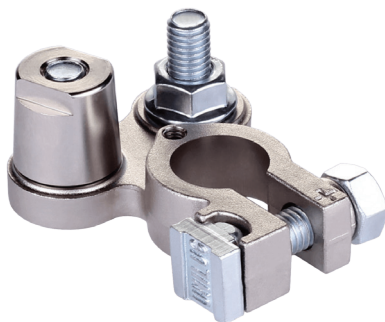
Positive kit includes lug assembly, adaptor post and protective cover
Retail code no.: **UMAP-K-RP**



Negative kit includes lug assembly, adaptor post and protective cover
Retail code no.: **UMAN-K-RP**



shown with both universal flanged hex nuts fitted



shown with one universal flanged hex nut and adaptor post fitted



shown with the Nylon battery lug cover fitted

Physical

Battery lug	Forged JIS 3771 brass satin nickel plating
Adaptor post	Machined JIS C3604 brass satin nickel plated
Protective cover	Impact/Temperature resistant PA-6 (Nylon)
Hardware	Cover screw SUS304, all other zinc plated steel

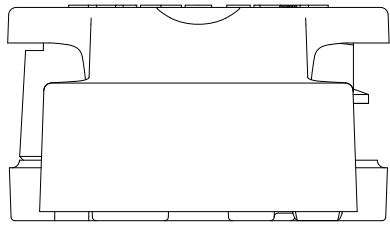
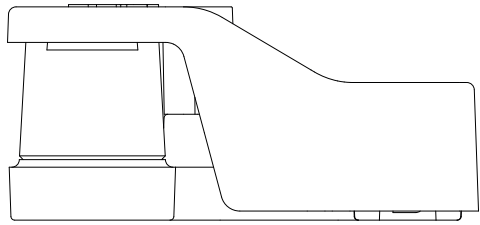
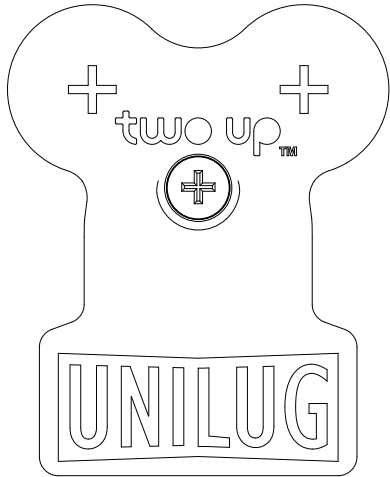
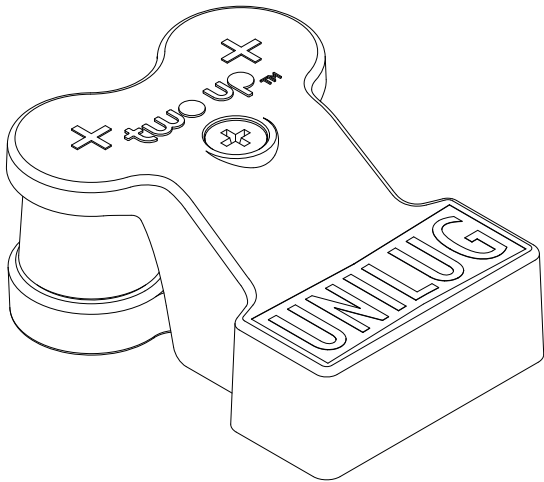
Mechanical

Termination	M8 x 18L threaded post
Adaptor post	M8 x SAE taper to J1811
Weight*	Positive kit: 175g Negative kit: 170g

* when fitted with adaptor post and protective cover

Dimensions

Shown in actual size.

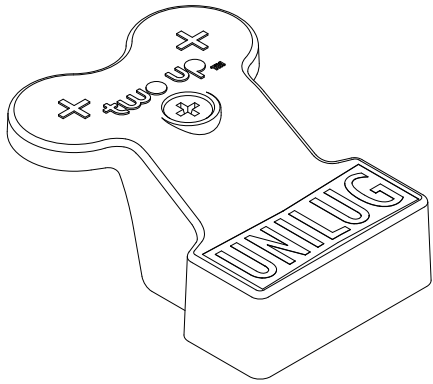
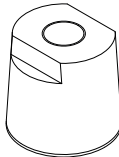
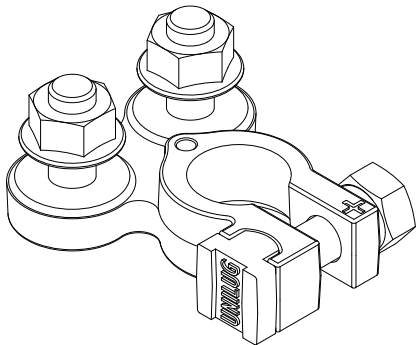


63 mm

51 mm

Other

Components available separately in bulk.



Lug Assembly

Positive: UMAP-LA
Negative: UMAN-LA

Adaptor Post

Positive: UMAP-AP
Negative: UMAN-AP

Protective Cover

Positive: UMAP-PC
Negative: UMAN-PC

Proudly produced by:



16 Parkinson Lane
O'Connor WA 6163
Australia

Phone +61 8 9331 3100
Fax +61 8 9331 5150
Email mail@amelec.com.au
Web www.amelec.com.au