

THE POWER OF
REDARC

SOLAR POWER.



**MORE STAYING
POWER.**

REDARC.COM.AU/SOLAR



SET AND FORGET.



LIGHTWEIGHT.



SPACE SAVING.



SOLAR POWER.

Adding solar to your camping or touring setup is essential if you're keen to get off-grid and spend more time adventuring. Whether it's portable or fixed, REDARC have you covered.

No more melted ice, no more warm drinks, no more compromises. Leave the crowds behind and get off-grid with REDARC's 12 volt solar range. Harness the power of the sun with flexible solar blankets, portable folding panels and permanent fixed panels available in 50 to 300 watt capacities and supported by a complete range of accessories.

- Use solar power to charge 12 volt automotive, marine and recreational vehicle battery systems
- Superior Grade A cell technology
- Ultra-lightweight
- Small footprint
- Easy to set up
- Industry-standard, genuine Anderson™ SB™ 50 plug connectors on folding panels and blankets

BATTERY CHARGERS AND BATTERY MANAGEMENT SYSTEMS.

For the ultimate off-grid power setup, pair your solar panels with REDARC's range of BCDC Dual In-Vehicle DC-DC Chargers or Manager30 Battery Management System.

Both systems feature next-generation battery charging technology and Maximum Power Point Tracking (MPPT) solar regulators, so a separate regulator is not required.

You can charge from both solar and the alternator simultaneously. And, with built-in Green Power Priority, it will select solar charging first, meaning less load on your alternator.



**BCDC
IN-VEHICLE
DUAL BATTERY
CHARGERS**

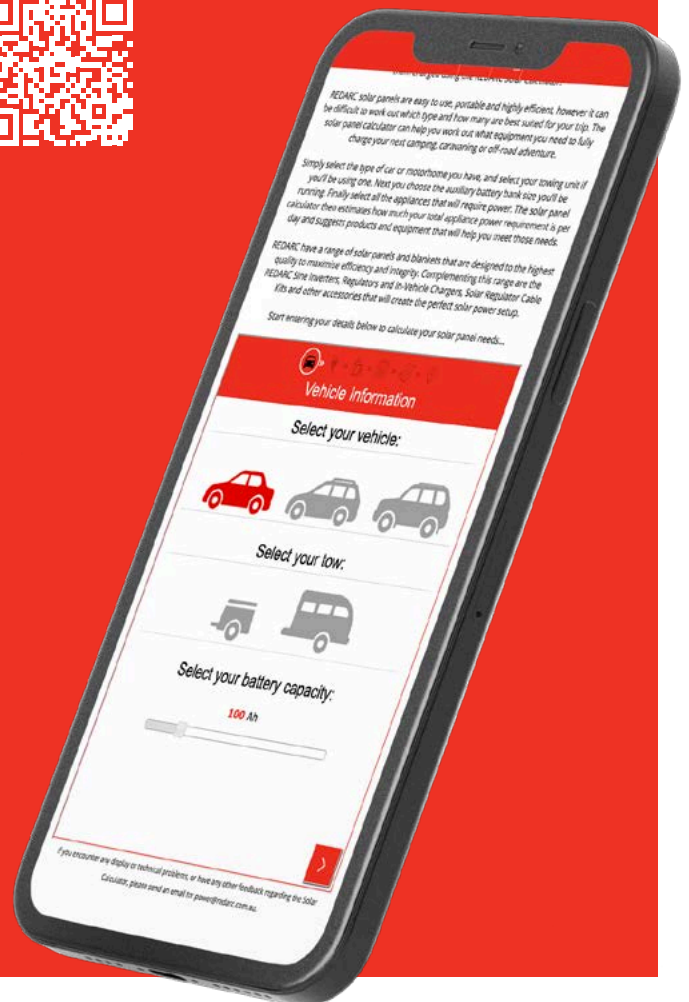


**MANAGER30
BATTERY
MANAGEMENT
SYSTEM**

REDARC SOLAR CALCULATOR

The REDARC solar calculator provides a guide to which solar products are best suited to your needs.

To access the solar calculator scan the QR code or visit redarc.com.au/solarcalculator



SOLAR BLANKETS AND PANELS.

The first step in generating electricity from the sun is with a good quality solar panel. REDARC's solar panels are built using the highest quality materials for the toughest conditions.

SOLAR BLANKETS.

If you live in your van or car, or travel for long periods; space is at a premium. Our flexible and convenient solar blankets are the way to go. Now packed with more value than ever, REDARC's solar blankets can be folded up into a neat package and offer flexibility that's not available with fixed or folding panels. Drape it over the bonnet or windscreen, lay it on the ground or hang it from the side of your awning. When it's time to hit the road, just fold it up and slide it under the car seat. For the ultimate in portable power, couple your solar blanket with the REDARC GoBlock.



SMFB1160
Monocrystalline cells



SMFB1240
Monocrystalline cells



SMFB1300
Monocrystalline cells



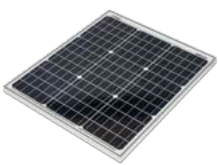
SPFP1120
Monocrystalline cells



SPFP1200
Monocrystalline cells

FIXED PANELS.

For the seasoned adventurer or self-confessed grey nomad who plans to travel for longer periods of time, you might be looking for a permanent, no fuss solution. Fixed panels will be the best option, especially for caravans and camper trailers, while also being the most cost-effective option. REDARC's fixed solar panels offer simplicity. Being fixed to your car, camper trailer or caravan, you never have to worry about adjusting the angle, positioning or setting up. They're available in sizes from 50 to 200 watts, offering plenty of flexibility when designing the setup to fit your roof.



SMSP1050
Monocrystalline cells



SMSP1080
Monocrystalline cells



SMSP1120
Monocrystalline cells



SMSP1180
Monocrystalline cells

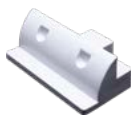


SMSP1200
Monocrystalline cells

ABS MOUNTING BRACKETS.



SMI9001
Corner mounting bracket



SMI9002
Side mounting bracket (x2)



SMI9003
525mm spoiler mounting bracket



SMI9007
670mm spoiler mounting bracket



SMC001
Single cable gland

ROOF RACK MOUNTING BRACKETS.



SPMB0001
For Rhino-Rack Vortex, Euro and HD roof bars



SPMB0002
For ARB Base Rack



SPMB0003
For Rhino-Rack Pioneer



SPMB0004
For 35mm Unistrut

SOLAR REGULATORS AND MONITORS.

Generating electrical power from the sun is the first step in the process. REDARC's range of regulators and monitors converts that power to a form that allows you to keep your batteries fully charged and in top condition.

ANDERSON™ SOLAR REGULATORS.



SRPA0120
10A regulator with Anderson™ connectors



SRPA0240
20A regulator with Anderson™ connectors



SRPA0360
30A regulator with Anderson™ connectors

SRPA Solar Regulators with Anderson™ SB™ 50 connectors are available in 10, 20 and 30 amp ratings. Featuring multi-stage charging (boost, absorption and float) REDARC's solar regulators ensure that the correct charge is supplied safely and efficiently, protecting batteries from overcharging.

REDARC's solar regulators work with multiple chemistry batteries including AGM, standard and calcium, are ideal for permanent installation or portable systems and have multiple levels of protection including over temperature, over charge and reverse polarity. SRPA regulators are best suited for use with the solar blankets and folding solar panels. When the MC4 to Anderson™ connector cable (SRC0017) is purchased, the fixed solar panels can use the Anderson™ range of regulators.

BARE WIRE SOLAR REGULATORS.



SRP0120
10A regulator with bare wire connectors



SRP0240
20A regulator with bare wire connectors

REDARC's SRP Solar Regulators with bare wire connectors are available in 10 and 20 amp ratings. The regulators ensure that the power supplied by your solar panels, through multi-stage charging, is at the right voltage to charge your house or auxiliary batteries. These regulators are suitable for charging up to two separate battery banks. The SRP regulators are primarily used with the range of fixed solar panels. When the Anderson™ to bare wire connector cable (SRC0016) is purchased, the solar blankets and folding solar panels can use the SRP range of solar regulators.

ANDERSON™ SOLAR REMOTE MONITOR.



SRPA-RM
REDARC's 12/24 volt solar monitor with a large, 3" back-lit LED display allows you to monitor the solar panels, battery and system information. It provides panel charging information, real time system monitoring and allows battery and configuration changes to the solar regulator. This product is only compatible with the SRPA range of solar regulators.

BARE WIRE SOLAR REMOTE MONITOR.



SRP0240-RM
The SRP0240-RM remote monitor provides an informative, user friendly display, tracking the power the Solar Panels are producing and the charge stage of the battery. This product is only compatible with the SRP range of solar regulators.

CABLES AND CONNECTORS.

REDARC's extensive range of cables and connectors offer easy connection to the solar range, with the ability to set up camp in a shady area but still get the most out of the sun. What's more, they can be easily used with REDARC's BCDC and Battery Management System ranges.

PANEL TO REGULATOR CABLES.



SRC0008
1.5m Anderson™
to Anderson™ Cable



SRC0018
5m Anderson™
to Anderson™ Cable



SRC0019
10m Anderson™
to Anderson™ Cable



SRC0001
5m Regulator
to Panel Cable



SRC0002
10m Regulator
to Panel Cable

REGULATOR TO BATTERY CABLES.



SRC0009
1.5m Anderson™
to Battery Clip Cable



SRC0010
1.5m Anderson™
to Battery Eyelet Cable



SRC0003
1.5m Regulator
to Battery Cable

MULTI-PANEL CABLE ACCESSORIES.



SRC0011
0.3m Anderson™
Series Cable



SRC0012
0.3m Anderson™
Parallel Cable



SRC0006
Positive and Negative
MC4 Y Adapters

CONNECTOR CABLES.



SRC0017
1.5m MC4 to Anderson™
Connector Cable



SRC0016
1.5m Anderson™
to Bare Wire Cable

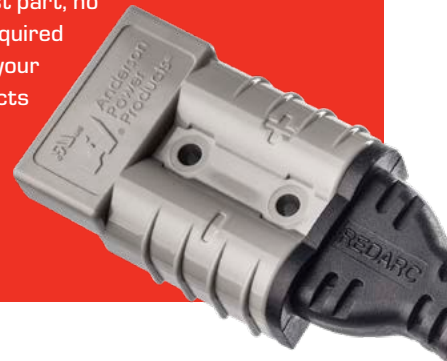
WHY ANDERSON?

Anderson™ plugs are common connections for recreational vehicles.

REDARC uses industry-standard, genuine Anderson™ SB™ 50 connectors across the solar range.

These high quality Anderson™ plugs are simple and fast to connect with no screw terminals and no risk of poor connections from frayed wires or loose terminals.

For the most part, no tools are required to connect your solar products together - just plug and play.



WHICH REGULATOR FOR YOUR SOLAR PANEL?

SOLAR PANEL	SRPA ANDERSON™ REGULATORS	SRP BARE WIRE REGULATORS
SAF1112	✓	✗**
SMFB range	✓	✗**
SPFP range	✓	✗**
SMSP range	✗*	✓

* The SMSP range is not compatible with SRPA Solar Regulators, Remote Monitor and cable accessory range unless an SRC0017 cable is used.

** SAF112, SMFB and SPFP range are not compatible with SRP Solar Regulators and Remote Monitor unless the SRC0016 cable is used.

SPECIFICATIONS.

SOLAR BLANKET SPECIFICATIONS.

	SMFB1160	SMFB1240	SMFB1300
Peak power output*	160W	240W	300W
Maximum power voltage	18.0V	18.0V	17.0V
Maximum power current	8.9A	13.4A	18.0A
Open circuit voltage	21.5V	21.5V	20.0V
Short circuit current	9.5A	14.2A	19.0A
Operating temperature range	0° to 85°C	0° to 85°C	0° to 85°C
Cell type	Monocrystalline	Monocrystalline	Monocrystalline
Minimum solar regulator size	SRPA0240	SRPA0240	SRPA0360
Dimensions opened (L x W x H)	1635 x 740 x 2.5mm	1635 x 1100 x 2.5mm	1995 x 1100 x 2.5mm
Dimensions closed (L x W x H)	365 x 365 x 50mm	365 x 365 x 80mm	365 x 365 x 85mm
Weight	4.5kg	6.5kg	8.0kg

FOLDING MONOCRYSTALLINE PANEL SPECIFICATIONS.

	SPFP1120	SPFP1200
Peak power output*	120W	200W
Maximum power voltage	20V	20V
Maximum power current	6A	10A
Open circuit voltage	24V	24V
Short circuit current	6.48A	10.8A
Operating temperature range	-40° to 85°C	-40° to 85°C
Cell type	Monocrystalline	Monocrystalline
Minimum solar regulator size	SRPA0120	SRPA0240
Dimensions opened (L x W)	1030 x 715 x 25mm	1350 x 790 x 25mm
Dimensions closed (L x W x H)	715 x 515 x 50mm	790 x 675 x 50mm
Weight	6.3kg	9.5kg

FIXED MONOCRYSTALLINE PANEL SPECIFICATIONS.

	SMSP1050	SMSP1080	SMSP1120	SMSP1180	SMSP1200
Peak power output*	50W	80W	120W	180W	200W
Maximum power voltage	20V	20V	20V	20V	20V
Maximum power current	2.5A	4A	6A	9A	10A
Open circuit voltage	22.3V	22.3V	22.3V	22.3V	22.3V
Short circuit current	3.7A	4.82A	6.48A	9.72A	10.8A
Operating temperature range	-40° to 85°C	-40° to 85°C	-40° to 85°C	-40° to 85°C	-40° to 85°C
Cell type	Monocrystalline	Monocrystalline	Monocrystalline	Monocrystalline	Monocrystalline
Minimum solar regulator size	SRP0120	SRP0120	SRP0120	SRP0240	SRP0240
Dimensions (L x W x H)	590 x 505 x 35mm	700 x 670 x 35mm	1005 x 670 x 35mm	1475 x 670 x 35mm	1110 x 992 x 35mm
Weight	3.6kg	5.5kg	7.5kg	10.7kg	11.8kg

SOLAR REGULATOR SPECIFICATIONS.

	SRP0120	SRPA0120	SRP0240	SRPA0240	SRPA0360
Output current	10A	10A	20A	20A	30A
Battery voltage	12/24V	12/24V	12/24V	12/24V	12/24V
Maximum power rating	120/240W	120/240W	240/480W	240/480W	360/720W
Charge type	PWM25Hz (factory setting) or PWM50HZ	PWM 50Hz	PWM25Hz (factory setting) or PWM50HZ	PWM 50Hz	PWM 50Hz
Waterproof IP rating	N/A	IP55	N/A	IP55	IP55
Connector type	Bare wire	Anderson™	Bare wire	Anderson™	Anderson™
Operating temperature	-35° to 50°C	-35° to 55°C	-35° to 50°C	-35° to 55°C	-35° to 55°C
Dimensions (H x W x D)	37 x 153 x 76mm	28 x 153 x 98mm	37 x 153 x 76mm	28 x 153 x 103mm	28 x 153 x 108mm
Weight	240g	480g	260g	520g	550g

REMOTE MONITOR SPECIFICATIONS.

	SRPA-RM	SRP0240-RM
Monitor communication	RS485	N/A
Power consumption - backlight on	<23mA	<30mA
Power consumption - backlight off	<15mA	<3mA
Operating temperature	-20° to 70°C	-10° to 40°C
LCD screen size	76.5 x 42mm (3.2")	70 x 45mm (3.3")
Faceplate screws included/size	Yes - 4 included/M4	No - 4 required
Wall bracket screws included	No - 4 required	No - 4 required
Connector type	Anderson™	Bare wire
Remote monitor connection	RJ45	RJ45
Dimensions - overall	114 x 114 x 48.2mm	95 x 95 x 24mm
Dimensions - screen faceplate	98 x 98 x 15.5mm	95 x 95 x 8mm
Dimensions - mounting bracket	114 x 114 x 45.5mm	112 x 112 x 35mm
Weight	320g	105g

REGULATOR BATTERY-TYPE INFORMATION.

BATTERY TYPE - SELECTABLE VIA SRPA-RM OR SRP0240-RM	AGM (DEFAULT SETTING) 12V/24V	STANDARD 12V/24V	CALCIUM 12V/24V
Battery voltage range (SRP)	9-15V/18-30V	9-15V/18-30V	9-15V/18-30V
Battery voltage range (SRPA)	9-16V/18-32V	9-16V/18-32V	9-16V/18-32V
Float voltage (SRP & SRPA)	13.6V/27.2V	13.6V/27.2V	13.6V/27.2V
Solar panel input voltage range (SRP)	16-30V/31-55V	16-30V/31-55V	16-30V/31-55V
Solar panel input voltage range (SRPA)	16-32V/34-50V	16-32V/34-50V	16-32V/34-50V
Absorption voltage (SRP & SRPA)	14.4V/28.8V	14.6V/29.2V	14.8V/29.6V
Equalise charging voltage (SRPA)	N/A	14.8V/29.6V	15.0V/30.0V

*Actual peak power output will vary according to atmospheric conditions and temperature. Specifications are subject to change without notice.



ANDERSON RANGE SOLAR REGULATOR AND REMOTE MONITOR INSTALLATION.

SRPA0120,
SRPA0240 or
SPRA0360
Solar Regulator

Optional SRPA-RM
Remote Monitor

Any solar blanket or portable folding solar panel from the REDARC solar range may be used "as is".

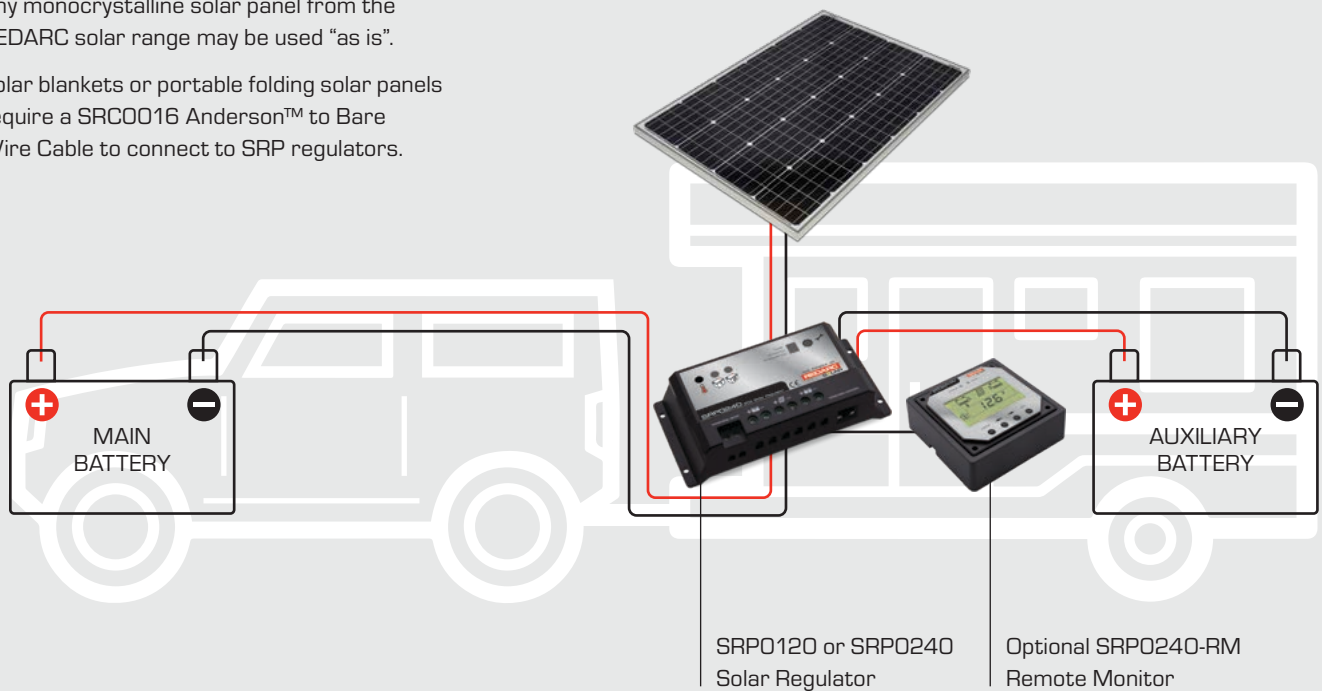
Monocrystalline solar panels require a SRC0017 MC4 to Anderson™ Cable to connect to SRPA regulators.



SRP RANGE SOLAR REGULATOR AND REMOTE MONITOR INSTALLATION.

Any monocrystalline solar panel from the REDARC solar range may be used "as is".

Solar blankets or portable folding solar panels require a SRC0016 Anderson™ to Bare Wire Cable to connect to SRP regulators.



For more information scan the QR code or visit the website...



For help choosing the best dual battery setup use the free **REDARC DUAL BATTERY SYSTEM SELECTOR**
Visit redarc.com.au/dual-battery-selector



REDARC.COM.AU

HEAD OFFICE

23 Brodie Road (North), Lonsdale South Australia, Australia 5160
Email power@redarc.com.au

AUSTRALIA

Head office 08 8322 4848
Tech support 1300 REDARC (1300 733 272)

NEW ZEALAND

Head office 9 222 1024
Tech support +61 1300 REDARC (+61 1300 733 272)

THE POWER OF

REDARC

Details and specifications are subject to change without notice.
© 2022 REDARC Electronics Pty Ltd.
All rights reserved.
7090-FLYER9-220209

